

en Mounting instructions zh 安装指南



Heat/Cool room thermostat

供热/制冷房间温控器

RDD510

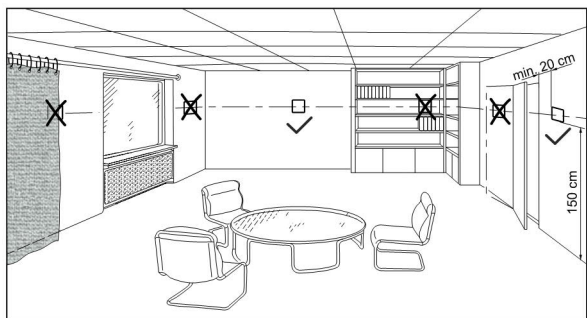


RDF510 Installation live reference demo
安装视频参考 RDF510

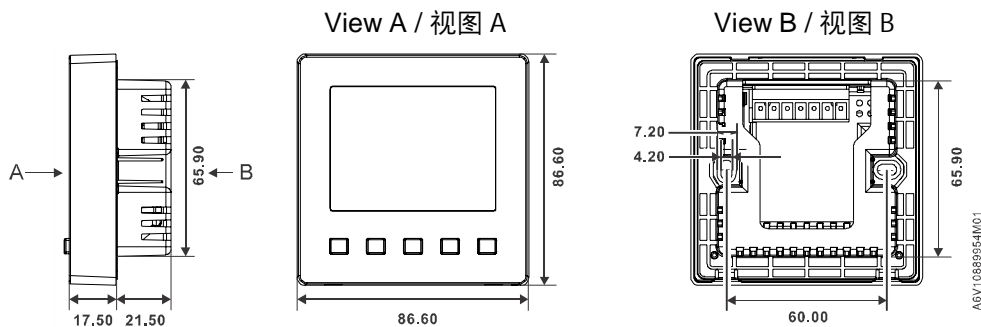


Datasheet
技术参数表

Mounting location of thermostat / 温控器安装位置



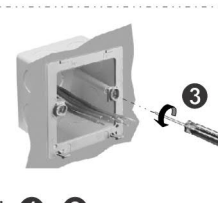
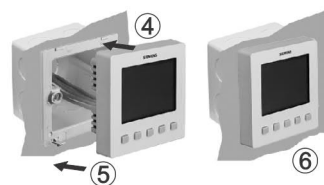
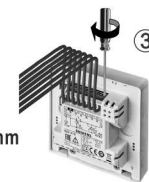
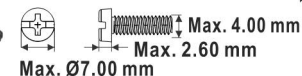
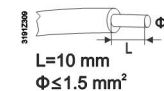
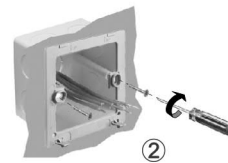
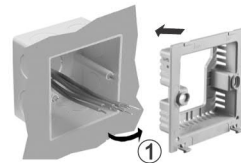
Dimensions (mm) / 尺寸 (毫米)



! Above are the dimensions for the thermostat and its mounting plate.
以上尺寸包括温控器和安装板。

Mounting and dismantling / 安装和拆卸

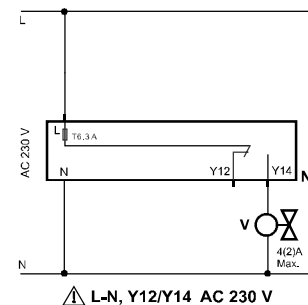
Mounting / 安装 ①-⑥



Dismounting / 拆卸 ①-③

Wiring diagrams / 接线图

RDD510



en (English)

zh (中文)

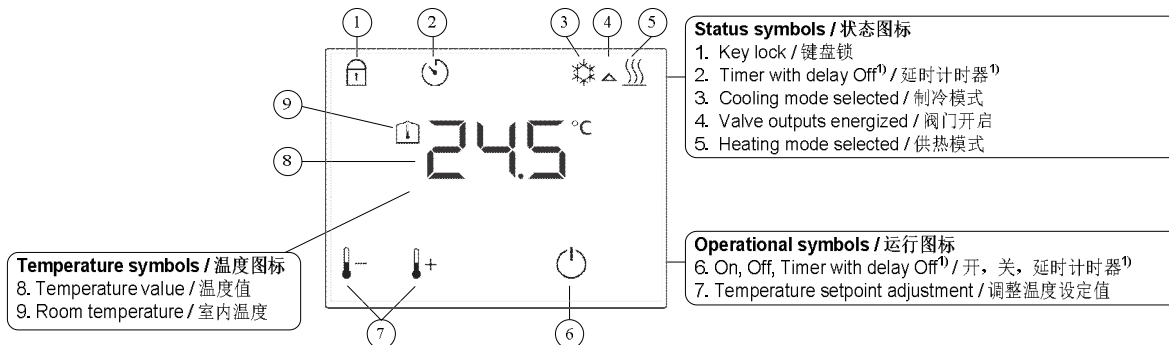
L, N	AC 230 V power supply, mains and neutral	工作电压为 AC 230 V
N1	RDD510	RDD510
V	Valve	阀门
Y12	SPDT relay output, normally closed	单刀双掷继电器, 常关
Y14	SPDT relay output, normally open	单刀双掷继电器, 常开
T 6.3 A	Internal fuse (6.3 A), replaceable	内部保险丝(6.3 A), 可替换
!	Do not connect Y12 to either L or N, or use Y12 as AC 230 V power supply	请勿将 Y12 接到电源的零线或火线上。 Y12 不能用作 AC 230 V 电源

Internal fuse (replaceable) / 内部保险丝 (可替换)

Fuse type / 类型	SLOW-BLOW / 慢断型
Size / 尺寸	Φ5.2 x 20 mm
Voltage rating / 电压	250 V
Current rating / 电流	6.3 A

! The fuse supports a total maximum loading (valve) of 5 A.
保险丝可支持最大总负载 (阀门) 为 5 A。

Overview / 概览



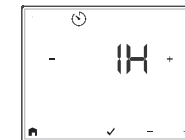
Status symbols / 状态图标
 1. Key lock / 键盘锁
 2. Timer with delay Off¹⁾ / 延时计时器¹⁾
 3. Cooling mode selected / 制冷模式
 4. Valve outputs energized / 阀门开启
 5. Heating mode selected / 供热模式

Operational symbols / 运行图标
 6. On, Off, Timer with delay Off¹⁾ / 开, 关, 延时计时器¹⁾
 7. Temperature setpoint adjustment / 调整温度设定值

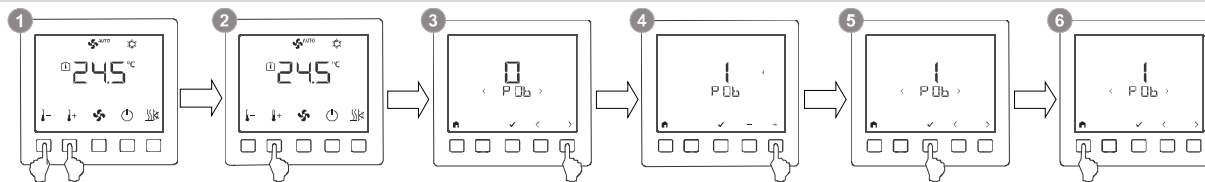
Temperature symbols / 温度图标
 8. Temperature value / 温度值
 9. Room temperature / 室内温度

1) Timer with delay Off / 延时计时器

If P28=0 (factory setting), press for more than 3 seconds to set the on-time duration each time. If P28=1, 2, 3 up to 23 hours, preset with a fixed on-time, countdown begins once the thermostat is ON (refer to Parameter list below).
 当 P28=0 (出厂设置) 时, 按下 3 秒钟可对运行时间进行设置。或通过设置参数 P28 (1 到 23 小时) 预设固定运行时间。温控器开启后, 倒计时开始 (请参考“参数列表”)。



Changing control parameters / 更改参数



- 1 Press + and – simultaneously for 3 seconds. / 同时按下 + 和– 3 秒钟。
- 2 Within 2 seconds, press + for 3 seconds to go to the parameter access mode. / 在 2 秒内按下 + 3 秒钟进入参数模式。
- 3 Press < or > to select the desired parameter. / 按下 < 或 > 选择参数。
- 4 Press < or > to edit the parameter, then use + and – to change its value. / 按下 ✓ 确认所选参数, 通过 + 和– 改变参数值。
- 5 Press ✓ to confirm the change, then continue to select/edit other parameters/values. / 按下 ✓ 确认所做更改, 然后继续对其他参数/参数值进行选择/更改。
- 6 Press to exit parameter access mode. / 更改完毕选择 退出参数模式。

Parameter list / 参数列表

Parameter 参数	Description 参数说明	Factory setting 出厂设置	Setting range 设定范围	Adj. 更改记录
P01	Control sequence / 控制序列	RDD510 = 0	0:= Heating only / 单热 1:= Cooling only / 单冷	
P05	Sensor calibration / 传感器校验	0 K	-5 ... +5 K	
P06	Standard temperature display / 标准温度显示	0	0:= Room temperature / 室内温度 1:= Setpoint / 设定值	
P09	Minimum setpoint in Comfort mode / 舒适模式下最小设定值	5 °C	5 ...40 °C	
P10	Maximum setpoint in Comfort mode / 舒适模式下最大设定值	35 °C	5 ...40 °C	
P14	Keylock function / 按键锁定功能	0	0:= No lock / 无按键锁定 1:= Full lock / 全锁 2:= Partial lock / 局部锁定	
P27	Operating mode settings upon power down 断电后运行模式设置	0	0:= Return to previous operating mode or user settings / 返回前一运行模式或用户设置 1:= Protection mode / 保护模式 2:= Comfort mode / 舒适模式	
P28	Timer with delay Off / 延时计时器	0	0:= Users to set on-time duration / 用户设置运行时间 1 to 23:= Preset with a fixed on-time in hours / 预设固定运行时间, 以小时为单位	
P30	Switching differential in heating mode / 供热模式下开关偏差	1 K	0.5...6 K	
P31	Switching differential in cooling mode / 制冷模式下开关偏差	1 K	0.5...6 K	
P65	Protection heating setpoint / 保护模式下的供热温度设定值	8°C	OFF, 5°C...Wcool _{pro} ; Wcool _{pro} =40°C max.	
P66	Protection cooling setpoint / 保护模式下的制冷温度设定值	OFF / 关	OFF, Wheat _{pro} ...40°C; Wheat _{pro} =5°C min.	
P71	Reload factory setting / 重载出厂设置	OFF / 关	OFF:= Disable / 取消; ON:= Reload start / 开始重载 “...” is displayed for 3 seconds during reload process / 重载过程中, “...” 在屏幕上显示 3 秒钟	

Please record all changes you make. / 请记录您所作出的更改。

To download the latest documentations and applications, go to: / 如需下载最新文档及应用, 请访问: <https://www.downloads.siemens.com/download-center/>。

Issued by
 Siemens Switzerland Ltd
 Smart Infrastructure
 Global Headquarters
 Theilerstrasse 1a
 CH-6300 Zug
 Tel. +41 58 724 2424
www.siemens.com/buildingtechnologies

© Siemens Switzerland Ltd, 2019
 Technical specifications and availability subject to change without notice.